

Project ARS 2000	Application Note 93 Analysis data fields fieldbus	Page 1 of 4
Originator MTX		Date 06.07.2007

1 Contents

1	Contents.....	1
2	Introduction	1
3	Reading of data fields	2
3.1	Summary.....	2
3.2	Body of commands	2
3.3	Data interpretation PROFIBUS	3

2 Introduction

The commands listed in this application note are covered by the servo positioning controller of the ARS 2000 product line with the following product layer of test-firmware:

3.4.100012.1.8

If necessary please contact your supplier for updates or visit Metronix's homepage at <http://www.metronix.de>.

Serial commands are not case sensitive. Invalid symbols will be ignored.

3 Reading of data fields

3.1 Summary

Data fields received via field bus can be displayed by a serial interface. This can be done by using special serial commands.

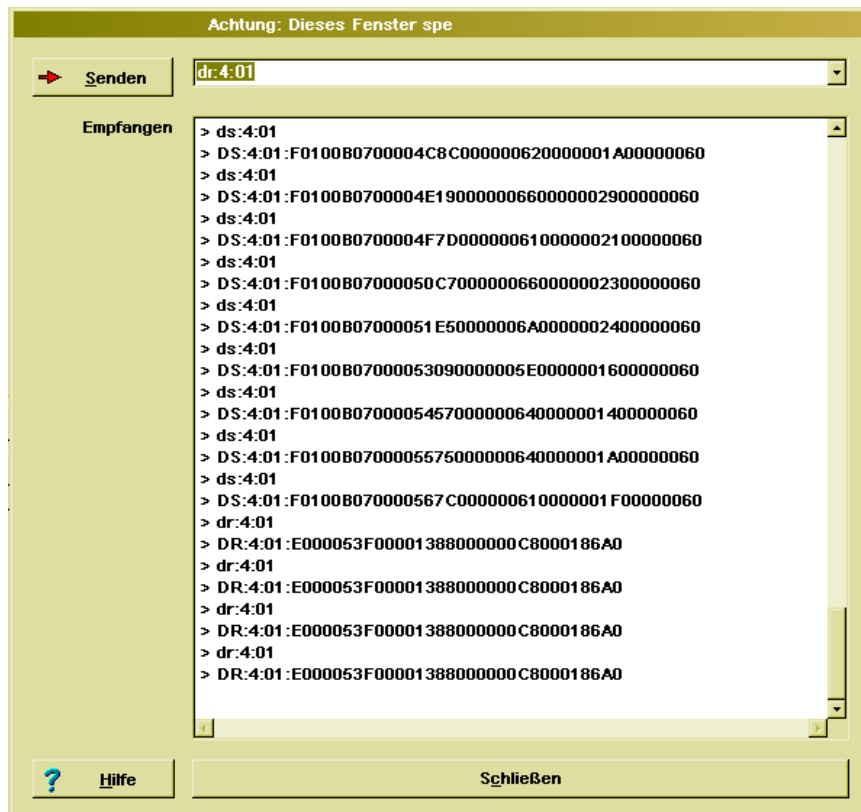
At the moment this operation is only available for the PROFIBUS field bus system.

3.2 Body of commands

Two special parameter commands are defined. By using these, data fields which are used to transfer process data via field bus system, can be displayed. The command syntax is as follows:

Command	Meaning
DR:4:01	Display of received data 4: telegram data PROFIBUS (receive telegram)
DS:4:01	Display of data to be send 4: telegram data PROFIBUS (respond telegram)

The command needs to be entered in the window (Menu File\Transfer):



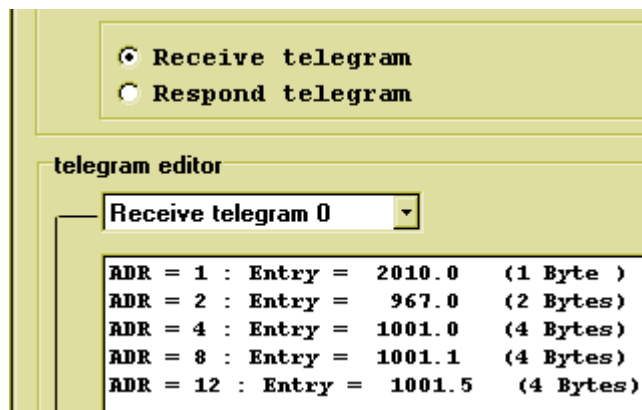
3.3 Data interpretation PROFIBUS

The application of these commands using profibus reflects data, which interchanges information between master and servo positioning controller periodically. On the basis of these displayed symbols it is for example possible to assign data respectively to recognize exchanges in data fields.

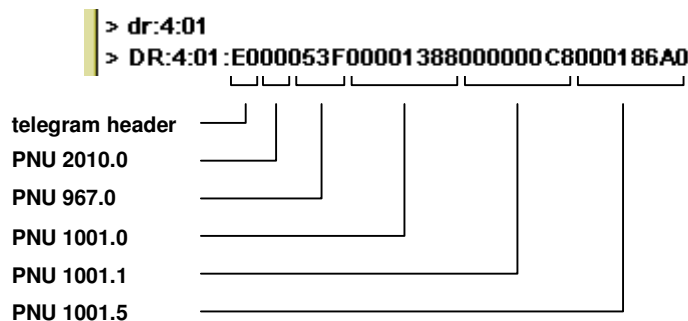
The sequence of bytes for 2 byte respectively 4 byte data types always corresponds with „High Byte ... Low Byte“. For special types of data this is indicated separately.

For the interpretation we recommend the comparison with the settings of the telegram editor (Menu *Parameter\Field bus\PROFIBUS\Telegram editor*). With the example mentioned above the following results from this:

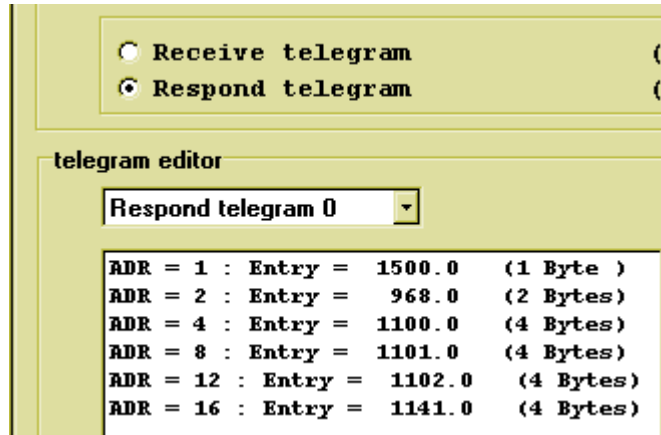
Settings in telegram editor for periodically received telegrams:



Display of received data in serial display with allocation of parameter numbers (PNUs):



Settings in telegram editor for the respond telegram to be send periodically:



Display of to be send data in serial display with allocation to parameter numbers (PNUs):

